

Lung Cancer Clinical Outcomes Publication 2019 (2017 patient cohort)

The sixth Lung Cancer Clinical Outcomes Publication reports the outcomes of operations to remove lung cancer for patients in English NHS hospitals during the 2017 calendar year. 27 NHS Trusts providing lung cancer surgery in 2017 have validated their activity for this period. This short report gives results for the local surgical services.

Survival

Your surgical unit	Surgical cases/resections	30d survival (adjusted) ¹	1yr survival (adjusted) ¹
Guy's and St Thomas' NHS FT	562/566	98.7% →	89.6% →
<i>England</i>	<i>6,641/6,684</i>	<i>98.1%</i>	<i>88.7%</i>

¹ The proportion of patients alive after 30 days and 1 year of surgery following adjustment for case mix variables (ages, sex, stage, performance status and socio-economic status)

↑ Good practice :: → Not significant :: ↓ Alarm (significantly worse at 99.8% level)

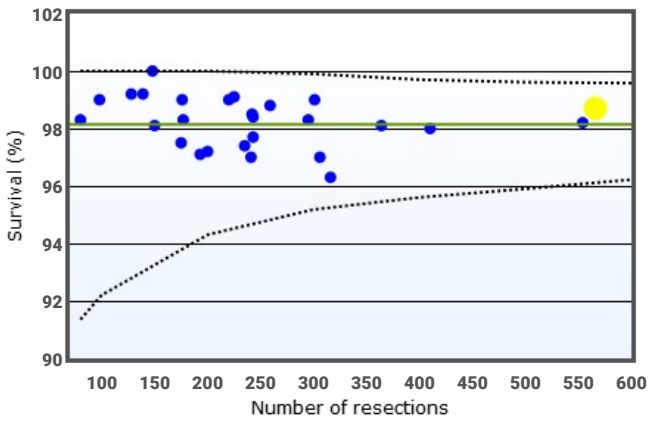
Other key measures

Your surgical unit	Resection rate ¹	Resection rate in PS 0-2/Stage I-II ²	Median LOS ³	90d readmissions ⁴	Pneumonectomy rate ⁵
Guy's and St Thomas' NHS FT	22.6%	77.7%	6.0 (4-9)	38.7%	3.2%
<i>England</i>	<i>18.4%</i>	<i>63.6%</i>	<i>6 (4-8)</i>	<i>41.0%</i>	<i>3.5%</i>

¹ The proportion of all lung cancer patients in the catchment of this surgical unit who undergo surgical treatment :: ² The proportion of lung cancer patients who are PS 0-2 and stage I/II in the catchment of this surgical unit who undergo surgical treatment :: ³ The median length of stay in hospital and interquartile range (days) for patients undergoing surgery :: ⁴ The proportion of patients undergoing surgery who require readmission to hospital within the first 90 days of their initial surgery :: ⁵ The proportion of patients undergoing surgery who have a pneumonectomy (removal of one entire lung)

Data for this report is based on patient-level information collected by the NHS, as part of the care and support of cancer patients. The data is collated, maintained and quality assured by the National Cancer Registration and Analysis Service, which is part of Public Health England (PHE). Validation of local data, and collection of data on surgical approach, has been performed in collaboration with the Society for Cardiothoracic Surgery (SCTS) and their network of local audit leads. Where necessary, and according to our policy, data has been suppressed if small numbers might lead to patient identification.

Adjusted 30-day survival ¹



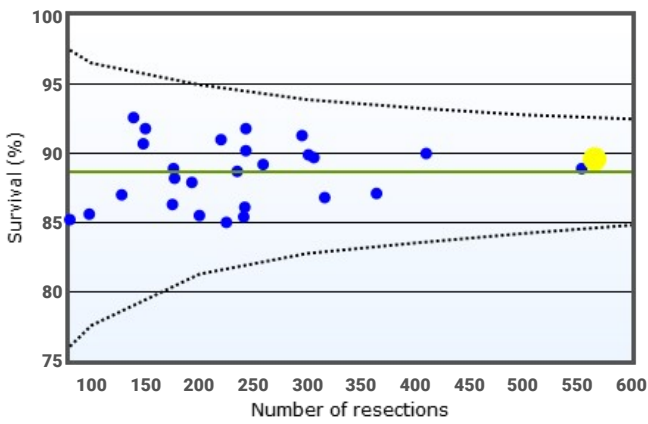
GUY'S AND ST THOMAS' NHS FT

98.7% vs 2016 +0.1% ▲

→ This result is not statistically different to other trusts

¹ Survival data are adjusted for age, gender, laterality (side of surgery), performance status, socio-economic status, cancer stage, FEV1, co-morbidity and pneumonectomy.

Adjusted 1-year survival ¹



GUY'S AND ST THOMAS' NHS FT

89.6% vs 2016 +0.4% ▲

→ This result is not statistically different to other trusts

¹ Survival data are adjusted for age, gender, laterality (side of surgery), performance status, socio-economic status, cancer stage, FEV1, co-morbidity and pneumonectomy.