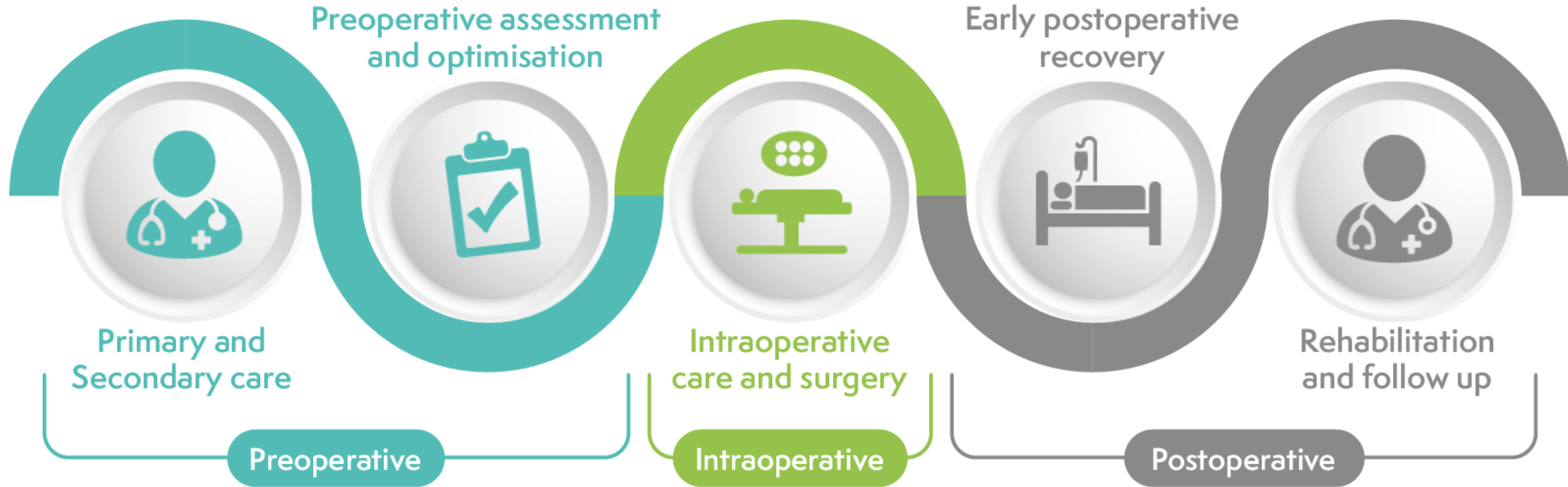


Perioperative Management of OSA in Adults



Primary Care

Screening ¹

Snoring	Cognitive dysfunction
Unrefreshing Sleep	Apnoeas
Tiredness/Fatigue	Waking Headache
Choking during sleep	Nocturia
	Insomnia

≥2 of the above:

Suspect OSA. Use Epworth Sleepiness Scale to assess sleepiness. Consider using [STOP-BANG](#) questionnaire

Priority factors for rapid assessment:

- Vocational driving or vigilance-critical job
- Unstable cardiovascular disease
- Pregnancy
- Preoperative assessment for major surgery

Secondary Care ¹

Assessment:

Home sleep study

Management:

Emphasis on **lifestyle advice and support for smoking cessation, alcohol reduction, weight loss and exercise**

Mild:

Mandibular advancement device

Continuous Positive Airway Pressure (CPAP) if symptoms are affecting quality of life in the presence of priority factors

Mod-Severe:

CPAP

Follow up of compliance, disease control and quality of life

1

NICE OSA GUIDELINES

2

PRE-OP ASSOCIATION OSA GUIDELINES

3

SOBA OSA GUIDE

4

ASA GUIDELINES ON MANAGEMENT OF PATIENTS WITH OSA

5

GUIDELINES FOR DAY CASE SURGERY

6

FICM/CPOC ENHANCED CARE GUIDELINES

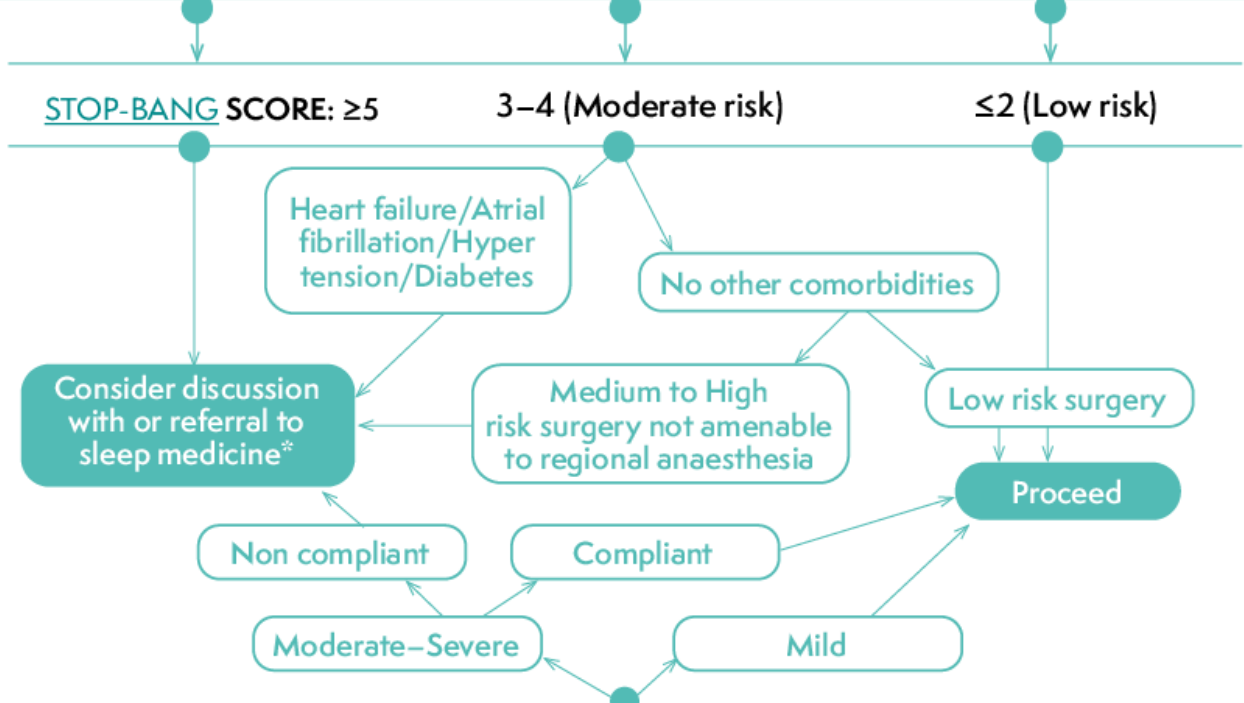
7

SOCIETY OF ANESTHESIA AND SLEEP MEDICINE GUIDELINE



Preoperative Phase 2

Patients without an existing diagnosis of OSA should be screened via the STOP-BANG questionnaire and risk stratified according to risk score:



For patients with a diagnosis of OSA, assess disease control and compliance with treatment

*Develop streamlined pathways between perioperative services and sleep medicine. Establishing home oximetry testing from perioperative clinic can improve screening accuracy and pathway efficiency

Do not delay urgent surgery for investigation of OSA. If high risk, manage as if known OSA and refer for assessment postoperatively

Examples of risk stratification tools: [SOBA OSA algorithm](#) 3 or [ASA OSA tool](#) 4

Aim for 4-6 weeks of CPAP therapy prior to planned surgery 6

OSA patients should not be denied access to day surgery based on diagnosis alone. Protocols should maximise opportunity for OSA patients to be managed safely via day case pathways if co-morbidities are optimised and surgery is amenable to multimodal opioid-sparing analgesia/regional anaesthesia 5

Support patients to engage in [shared decision making](#), lifestyle modification and preparation for surgery to reduce OSA associated risk 6

Empower patient to bring in their own CPAP machine and use it post operatively 7 (may require adapter to use with oxygen in immediate postoperative period)



- 1 NICE OSA GUIDELINES
- 2 PRE-OP ASSOCIATION OSA GUIDELINES
- 3 SOBA OSA GUIDE
- 4 ASA GUIDELINES ON MANAGEMENT OF PATIENTS WITH OSA
- 5 GUIDELINES FOR DAY CASE SURGERY
- 6 FICM/CPOC ENHANCED CARE GUIDELINES
- 7 SOCIETY OF ANESTHESIA AND SLEEP MEDICINE GUIDELINE

Intraoperative Care & Surgery

8x increase in difficult airway incidence

Increased opioid sensitivity ²

Regional/local techniques
are gold standard ⁴

Caution with Interscalene Blocks due to risk of phrenic
nerve palsy

If sedation, use capnography and consider HFNO or CPAP

Limited opioid strategy

Full NMB reversal prior to awake extubation (Consider
Sugammadex)

1

NICE OSA
GUIDELINES

2

PRE-OP ASSOCIATION
OSA GUIDELINES

3

SOBA
OSA GUIDE

4

ASA GUIDELINES
ON MANAGEMENT OF
PATIENTS WITH OSA

5

GUIDELINES FOR
DAY CASE SURGERY

6

FICM/CPOC
ENHANCED CARE
GUIDELINES

7

SOCIETY OF
ANESTHESIA AND SLEEP
MEDICINE GUIDELINE





Postoperative Care

Recover in facility where CPAP can be safely administered

Consider HDU or enhanced care for increased monitoring requirement or those at high risk according to risk stratification **6**

Only discharge to unmonitored environment when no longer at risk of respiratory depression **4**

Follow up existing and suspected OSA by sleep services in community

1
NICE OSA GUIDELINES

2
PRE-OP ASSOCIATION OSA GUIDELINES

3
SOBA OSA GUIDE

4
ASA GUIDELINES ON MANAGEMENT OF PATIENTS WITH OSA

5
GUIDELINES FOR DAY CASE SURGERY

6
FICM/CPOC ENHANCED CARE GUIDELINES

7
SOCIETY OF ANESTHESIA AND SLEEP MEDICINE GUIDELINE

STOP-BANG



Screening questionnaire +/- Epworth Sleepiness scale:

Snoring

Tiredness (or Epworth score >12)

Observed apnoeas

Pressure: Hypertension

BMI >35 kg.m⁻²

Age >50

Neck Circumference >40cm

Gender: Male

1

NICE OSA
GUIDELINES

2

PRE-OP ASSOCIATION
OSA GUIDELINES

3

SOBA
OSA GUIDE

4

ASA GUIDELINES
ON MANAGEMENT OF
PATIENTS WITH OSA

5

GUIDELINES FOR
DAY CASE SURGERY

6

FICM/CPOC
ENHANCED CARE
GUIDELINES

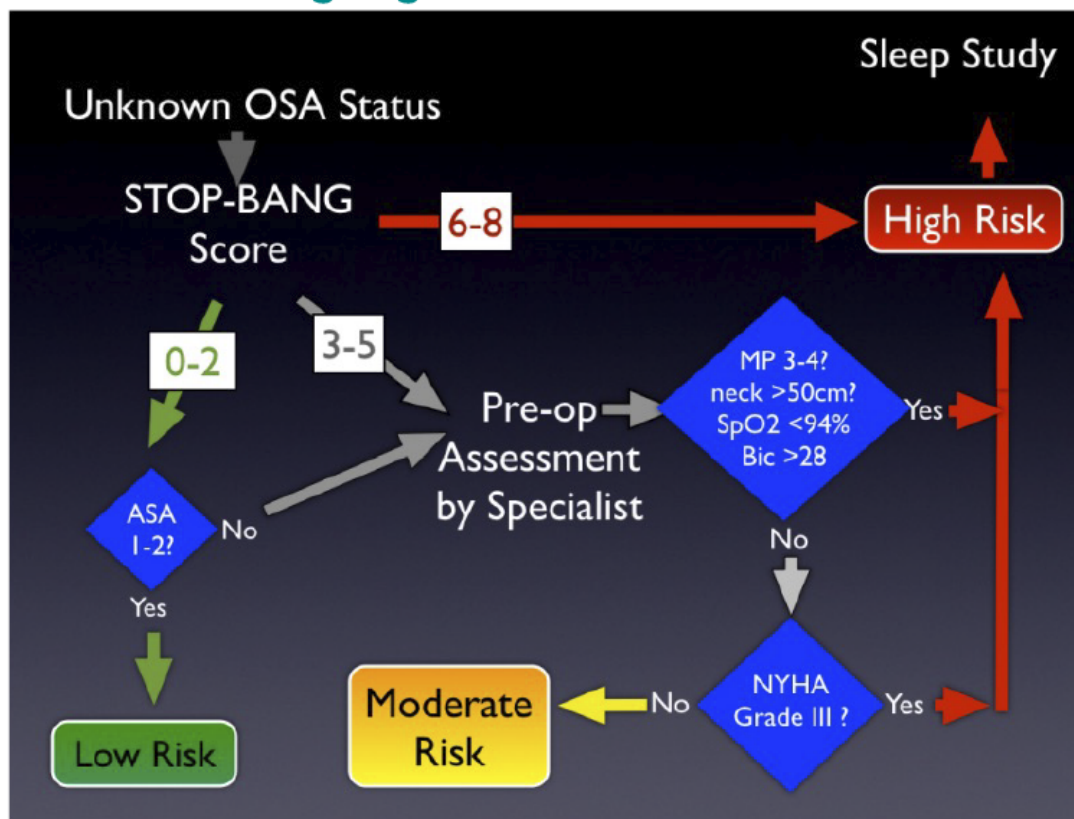
7

SOCIETY OF
ANESTHESIA AND SLEEP
MEDICINE GUIDELINE

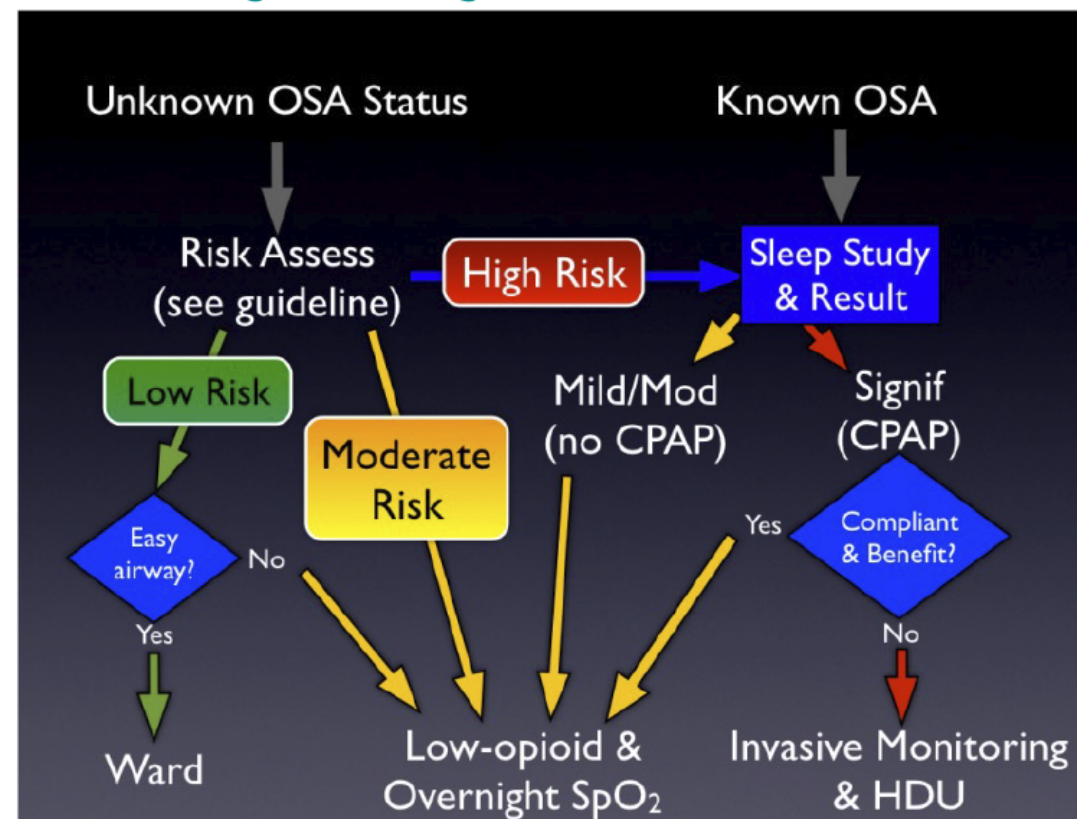


Recommendations for screening and management of Sleep Disordered Breathing (SDB) in patients undergoing bariatric surgery

OSA Screening Algorithm for the Obese Patient



OSA Management Algorithm for the Obese Patient



Practice Guidelines for the Perioperative Management of Patients with Obstructive Sleep Apnea

A. Severity of OSA

	Points
None	0
Mild	1
Moderate	2
Severe	3

B. Invasiveness of surgery and anaesthesia:

Superficial surgery under local anaesthesia or peripheral nerve block without sedation	0
Superficial surgery with moderate sedation or general anaesthesia	1
Peripheral surgery with spinal or epidural anaesthesia (with no more than moderate sedation)	1
Peripheral surgery with general anaesthesia	2
Airway surgery with moderate sedation	2
Major surgery with general anaesthesia	3
Airway surgery with general anaesthesia	3

C. Requirement for post-operative opioids:

None	0
Low dose oral opioids	1
High dose oral, parenteral, or neuraxial opioids	3

D. Estimation of perioperative risk:

Overall score = score for A (0–3) plus the greater of the score for either B or C (0–6)

4 = increased perioperative risk

> 4 = significantly increased perioperative risk

*One point may be subtracted if a patient has been on CPAP before surgery and will continue to use own appliance consistently during the perioperative period.

**One point should be added if a patient with mild or moderate OSA also has a higher resting PaCO₂ (> 6.5 KPa)



Table 4

Unadjusted incidence rates and adjusted odds ratios (OR) of postoperative cardiopulmonary complications for treated and untreated obstructive sleep apnoea patients (Treatment= CPAP)

Outcome	No OSA	OSA Untreated	OSA Treated	Adjusted OR
Any cardiopulmonary complication	4.9%	6.4%	4.2%	1.8
Postoperative myocardial infarct	0.6%	1.4%	0.6%	2.6
Unplanned reintubation	1.8%	2.7%	1.4%	2.5
Postoperative arrhythmia	1.5%	1.6%	1.4%	1.4
Postoperative cardiac arrest	0.6%	0.9%	0.4%	2.5

Adjusted OR compares patients with OSA who are treated and untreated.