



Royal College
of Physicians



Society for Cardiothoracic Surgery
in Great Britain and Ireland

Lung cancer clinical outcomes publication 2017

(for surgical operations performed in 2015)

November 2017



In association with:



Public Health
England



The University of
Nottingham

UNITED KINGDOM · CHINA · MALAYSIA



HQIP

Healthcare Quality
Improvement Partnership

The Royal College of Physicians

The Royal College of Physicians (RCP) plays a leading role in the delivery of high-quality patient care by setting standards of medical practice and promoting clinical excellence. We provide physicians in over 30 medical specialties with education, training and support throughout their careers. As an independent charity representing more than 34,000 fellows and members worldwide, we advise and work with government, patients, allied healthcare professionals and the public to improve health and healthcare.

The Care Quality Improvement Department of the RCP delivers projects that aim to improve healthcare in line with the best evidence for clinical practice: guideline development, national comparative clinical audit, the measurement of clinical and patient outcomes, and change management. All of our work is carried out in collaboration with relevant specialist societies, patient groups and NHS bodies.

The Society for Cardiothoracic Surgery in Great Britain and Ireland

The Society for Cardiothoracic Surgery in Great Britain and Ireland (SCTS) was founded in 1934. A self-funding organisation, it is the representative body for thoracic and cardiac surgery in the UK and Ireland. The SCTS has pioneered the collection and publication of surgical outcomes data. It has maintained and published a registry of thoracic surgery since 1980, through a network of audit leads in each thoracic surgical unit across Britain and Ireland. The SCTS currently contributes to national audits in children's and adult heart surgery, and lung cancer surgery.

Healthcare Quality Improvement Partnership

The Healthcare Quality Improvement Partnership (HQIP) is led by a consortium of the Academy of Medical Royal Colleges, the Royal College of Nursing and National Voices. Its aim is to promote quality improvement, and in particular to increase the impact that clinical audit has on healthcare quality in England and Wales. HQIP holds the contract to manage and develop the National Clinical Audit and Patient Outcomes Programme (NCAPOP), comprising more than 30 clinical audits that cover care provided to people with a wide range of medical, surgical and mental health conditions. The programme is funded by NHS England, the Welsh Government and, with some individual audits, also funded by the Health Departments of Scotland, DHSSPS Northern Ireland and the Channel Islands. www.hqip.org.uk

Citation for this document

Royal College of Physicians. *Lung cancer clinical outcomes publication 2017 (for surgical operations performed in 2015)*. London: RCP, 2017.

Copyright

All rights reserved. No part of this publication may be reproduced in any form (including photocopying or storing it in any medium by electronic means and whether or not transiently or incidentally to some other use of this publication) without the written permission of the copyright owner. Applications for the copyright owner's written permission to reproduce any part of this publication should be addressed to the publisher.

Copyright © Healthcare Quality Improvement Partnership 2017

ISBN 978-1-86016-686-0

eISBN 978-1-86016-687-7

Royal College of Physicians

11 St Andrews Place

Regent's Park

London NW1 4LE

www.rcplondon.ac.uk

Registered Charity No 210508

| | |
|----------------------|---|
| Document purpose | To disseminate results on the outcomes of lung cancer surgery for patients who had operations between 1 January and 31 December 2015 |
| Title | <i>Lung cancer clinical outcomes publication 2017 (for surgical operations performed in 2015)</i> |
| Authors | Royal College of Physicians, Care Quality Improvement Department; Society for Cardiothoracic Surgery in Great Britain and Ireland |
| Publication date | November 2017 |
| Target audience | NHS staff in lung cancer multidisciplinary teams; hospital managers and chief executives; commissioners; lung cancer researchers; lung cancer patients, their families and their carers |
| Description | This is the fourth lung cancer clinical outcomes publication on individual activity of surgeons or their specific contribution to lung care. The data relate to patients diagnosed with lung cancer who underwent surgery during the period between 1 January and 31 December 2015. |
| Related publications | National Lung Cancer Audit annual reports: www.rcplondon.ac.uk/NLCA |
| Contact | nlca@rcplondon.ac.uk |

Commissioned by:



Report and analysis prepared by:

Care Quality Improvement Department, Royal College of Physicians

Rosie Dickinson, National Lung Cancer Audit project manager

Paul Beckett, consultant respiratory physician, National Lung Cancer Audit senior clinical lead

Society for Cardiothoracic Surgery in Great Britain and Ireland

Doug West, consultant thoracic surgeon, Society for Cardiothoracic Surgery thoracic audit lead

National Cancer Registration and Analysis Service

Sharon Almond, business support officer

Eleanor Fitzgerald, cancer intelligence analyst

Ruth Jack, epidemiologist / research associate

Karen Linklater, information analyst / researcher

Tasha Wood, audit project manager

Faculty of Medicine and Health Sciences, University of Nottingham

Aamir Khakwani, post-doctoral research fellow

Richard Hubbard, professor of respiratory epidemiology

Thank you to all the lung cancer surgical teams that have contributed data to the audit; without your considerable efforts, this report would not be possible.

Contents

| | |
|---|-----------|
| Foreword | 6 |
| Introduction | 7 |
| Background | 8 |
| Understanding the data | 9 |
| Results | 12 |
| Appendix 1: Early outcomes for surgical resection units in England | 21 |
| Appendix 2: One-year survival and length of stay after surgical resection in England | 22 |
| Appendix 3: Resection rates by surgical trust and by trust first seen, from the NLCA main report (2015 data) | 24 |
| Appendix 4: Glossary | 30 |
| Appendix 5: Society for Cardiothoracic Surgery unit audit leads | 32 |

Foreword

This is the fourth lung cancer clinical outcomes publication (LCCOP). It reports the outcomes of operations to remove lung cancer for patients in English NHS hospitals during the 2015 calendar year. Twenty-eight NHS trusts provided lung cancer surgery in 2015, and the 27 units still active have validated their activity for this period. This engagement is excellent and adds greatly to the quality of the LCCOP project.

We continue to see increasing numbers of lung resections performed for lung cancer, although the 4.9% increase in activity seen this year is less than in recent years. Despite this increase in activity, survival rates at both 30 and 90 days have registered subtle but consistent improvements over the 4 years of the LCCOP project.

The number of operations performed by individual surgeons continues to rise, with a median of 49 cases per surgeon this year. This may reflect a decrease in the number of 'cardiothoracic' surgeons, who perform both heart and lung surgery in their routine work, and an increase in surgeons who concentrate on lung surgery alone.

This year we report adjusted 1-year survival after surgery at unit level. The decision to undergo an operation involves balancing short-term risks against the hope of longer term gain, so the reporting of longer term outcomes seems a natural progression for a cancer surgery audit. It is important to emphasise that many factors outside the control of surgical teams are very likely to affect 1-year survival. Access to and the quality of follow-up care or oncology treatments will almost certainly affect survival at 1 year, and are a shared responsibility of the whole cancer team. Also important is the proportion of people with lung cancer who are treated with surgery (the resection rate), and we know that this varies considerably across the country.

Therefore, although longer term survival after surgery is important and of interest to patients, we advise caution in using this metric as a direct measure of the quality of surgical care. This metric should not be used in isolation, but could help to direct future local audit or quality improvement activity by the wider lung cancer team.

Another addition this year is data on the use of minimal access approaches. Thoracoscopic surgery uses a camera and specially designed instruments to allow surgery with smaller incisions and no rib spreading, and is used increasingly for lung cancer surgery. Robotic assistance, where a surgeon directs the movements of a robotic device to perform surgery through small incisions, is now being pioneered in some lung cancer surgery units. For the first time this year, we publish detail on the use of thoracoscopic and robotic surgery, and unadjusted survival data for lobectomy, the commonest lung cancer operation.

In future years the Society for Cardiothoracic Surgery (SCTS) hopes to see further expansion of the LCCOP project, ideally guided by feedback from lung cancer patients, their families and the public.

Mr Doug West

Thoracic surgery audit lead, Society for Cardiothoracic Surgery in Great Britain and Ireland

Dr Paul Beckett

Senior clinical lead, National Lung Cancer Audit

Introduction

The lung cancer clinical outcomes publication (LCCOP) is an NHS England initiative, commissioned by the Healthcare Quality Improvement Partnership (HQIP), to publish quality measures at unit level and at the level of individual consultant doctors, using national clinical audit and administrative data. The aims of publishing these results are to:

- reassure patients that the quality of clinical care is high
- assist patients in having an informed conversation with their consultant, GP or healthcare professional about the procedure or operation that they may have
- provide information to individuals, teams and organisations to allow them to monitor and improve the quality of the clinical care that they provide locally and nationally
- inform the commissioning of NHS lung cancer services.

This is the fourth report on the individual activity of surgeons and their contribution to lung cancer care. The data relate to patients diagnosed with lung cancer (including non-small-cell lung cancer, carcinoid and small-cell lung cancers) who underwent surgery during the period between 1 January and 31 December 2015. Data for this report are based on patient-level information collected by the NHS, as part of the care and support of cancer patients. The data are collated, maintained and quality assured by the National Cancer Registration and Analysis Service, which is part of Public Health England (PHE). Validation of local data, and collection of data on surgical approach, has been performed in collaboration with the Society for Cardiothoracic Surgery (SCTS) and their network of local audit leads.

Outcome measures

The following outcomes are reported:

- the number of operations carried out by all the specialist hospitals that provide surgery for lung cancer
- the names of the consultant surgeons and how many operations each surgeon completed
- the proportion of patients who survive at 30 days, 90 days and 1 year after their operation for each unit
- the median length of stay in hospital following an operation.

Reports containing the resection rates for units that normally submit to a surgical unit are available to download from www.scts.org.

The results have been adjusted to take into account the patient casemix, which may affect the outcome of the operation. For example, the age and fitness of a patient before surgery affects the risk that they will face from undergoing surgery.

The full data are available on www.scts.org and will be available on NHS Choices and My NHS (www.nhs.uk) from 5 December 2017.

Background

Data collection

NHS hospitals submit the details for all lung cancer patients, including patients undergoing lung cancer surgery, to the National Lung Cancer Audit (NLCA) via the National Cancer Registration and Analysis Service (NCRAS). The data are linked to other datasets, including Hospital Episode Statistics (HES). A list of all lung cancer patients undergoing surgery is generated from these data and linked to individual surgeons from each surgical unit. The surgical unit has the opportunity to validate the dataset prior to publication. This work is facilitated by collaborative working between the NLCA, NCRAS and SCTS.

This report does not include data for private patients, but it does include 139 patients from Wales, the Isle of Man and the Channel Islands who were operated on in NHS hospitals in England.

Organisation of lung cancer services

Treatment plans for lung cancer patients are discussed and agreed by lung cancer MDTs, which are present at every acute hospital in England. Owing to the complexity of the surgery and aftercare required, lung cancer surgery is performed in specialist thoracic and cardiothoracic surgical units. In 2015, there were 28 such hospitals in England (see Appendix 1). One of these 28 hospitals, the Royal Devon and Exeter, has stopped performing lung cancer surgery since 2015.

Lung cancer treatment

Treatment plans for lung cancer patients are based on four key factors.

- 1 **The type of lung cancer found on biopsy:** Surgery is generally recommended for patients with one of a group of lung cancers called non-small-cell lung cancers.
- 2 **The extent of disease (stage) at presentation:** Approximately two-thirds of lung cancer patients present with lung cancer that has already spread outside the lung, which means that it is not possible to remove all of the cancer by an operation. Surgery is the first choice of treatment for patients who present with early-stage lung cancer, as it offers the best chance of a cure.
- 3 **The presence of other serious diseases, in addition to lung cancer:** Lung cancer patients often have diseases such as emphysema and heart disease, which means that they may not be fit enough to cope with major lung surgery.
- 4 **Patient preference:** Some patients decide that they do not wish to have a certain form of lung cancer treatment, including surgery. Lung cancer MDTs will always support patients in the decision-making process and respect the final decision that a patient makes regarding their treatment.

Understanding the data

The results are divided into the following areas of activity and outcomes for patients undergoing lung cancer surgery in the 12-month period between January and December 2015.

Number of operations

- Total number of operations for lung cancer and type of operation.
- The names of the surgeons working in each surgical unit and the numbers of operations per surgeon (this is available online at www.scts.org).

Demographics

This report provides a national breakdown of demographics for the surgical population:

- by age
- by sex.

Performance status

The performance status (PS) of a patient is systematically assessed based on their ability to undertake the tasks of normal daily life compared with that of a healthy person.

Type of operation

The report includes analysis of operations by subtype. Operations have been reported in the following groups:

- bilobectomy (removal of two of the three lobes of the right lung), lobectomy (removal of one lobe of the lung) and sleeve lobectomy (removal of a lobe or whole lung together with a 'sleeve' of the main airway)
- sublobar resection, including wedge and multiple wedge resection or segmental resection
- pneumonectomy (removal of a whole lung)
- complex resection, for example resection of lung with chest wall
- other resections.

It also includes a national breakdown of the surgical approach used for lung cancer resection:

- open surgery
- thoracoscopic surgery (VATS – video-assisted thoracic surgery)
- robotic assisted surgery
- procedures started by thoracoscopic or robotic approaches but converted to open surgery during the operation.

Survival rates

Survival rates at 30 days, 90 days and 1 year (365 days) after surgery have been produced for surgical units. Surgeons increasingly work as part of integrated teams, perhaps with some members specialising in more advanced tumours or higher-risk surgery. Fortunately survival rates after surgery are high. For these reasons, we believe that the best assessment of the quality of care is to look at the results of whole teams combined.

This year we report a new outcome, the survival rate at 1 year following surgery. We have included this because we believe that patients contemplating cancer treatment want to know their chance of long-term survival.

However, caution is needed in using this outcome as a marker of the quality of surgery in a unit for two reasons. Firstly, factors unrelated to surgery and the surgical team, such as access to follow-up care and adjuvant chemotherapy, are very likely to influence 1-year survival. Secondly, we do not have all the data that might affect this outcome available for risk adjustment. We therefore suggest that the 1-year data are regarded as exploratory at this stage. We encourage units to reflect on this data, but to interpret it in the wider context of other available information on their local lung cancer service. We welcome comments on the reporting of this data.

Risk adjustment

This report includes data that have been risk adjusted. This means that the results have taken into account the different casemix of patients that individual units operate on. The variables used were age, sex, performance status (PS), cancer stage, socioeconomic status (using the Townsend index), comorbidity (using the Charlson index), a measure of lung function known as the FEV1 (forced expiratory volume in the first second) and laterality (left/right side of the chest) of the lung cancer.

We present the adjusted data as odds ratios (ORs), which refer to the chance of an outcome happening after risk adjustment. The OR of 30-day, 90-day and 1-year survival is calculated by unit and relative to the whole LCCOP population. For example, if a unit has a 30-day survival rate with an OR of more than one, their survival rate is higher than the national average once adjusted for the casemix of their patients.

The datasets available for casemix adjustment do not contain some variables that may correlate with outcome. For example, the widely used Thoracoscore risk calculator includes data such as the American Society of Anaesthesiologists (ASA) grade, which is not available for casemix adjustment in LCCOP. It is possible that some of the variation seen between units is due to these factors. However, the approach we use does provide for a fairer comparison between units.

Further information on the risk adjustment methods used is available in our methodology report, which can be downloaded from www.scts.org.

Length of stay in hospital

The median length of stay in hospital for each surgical unit is presented. The number of days that a patient spends in hospital before, during and after an operation can be related to the outcome of the operation, patient fitness before surgery, and the organisation of the hospital or unit. A number of quality improvement initiatives, such as enhanced recovery after surgery (ERAS) protocols and day of surgery admission (DOSAs), can reduce the length of stay for patients, as well as reduce unnecessary costs.

Length of stay is also important information for patients and their families to inform them about what is to be expected after the procedure.

We are looking at whether readmission rates can be accurately produced for use in future publications.

Surgical resection rates

Surgical units usually provide services for several trusts. For each of these trusts (sometimes referred to as the 'trust first seen'), the NLCA calculates a resection rate. The resection rate is the number of operations performed, expressed as a proportion of all the lung cancer patients (including small-cell, non-small-cell and pulmonary carcinoid tumours) diagnosed at that trust.

This is an important marker of the quality of care, as higher resection rates are linked to better overall survival rates. It is the role of the whole lung cancer MDT to ensure that as many patients who could benefit are referred for surgery.

Data on hospital resection rates are produced by the NLCA and published in our main annual report (see www.rcplondon.ac.uk/NLCA).

We have asked surgical units to confirm which trusts they serve and have reproduced the resection rate data from the main NLCA report in Appendix 3. The surgical trust appears in column one and the names of their referring trust cancer teams and their data appear in the other columns. The resection rates are adjusted to account for the effect of certain demographic factors.

Resection rates are calculated according to the 'trust first seen' on their clinical pathway and not by individual hospitals or clinicians. A small number of trusts contain more than one hospital with a lung cancer MDT, and some MDTs send patients to more than one surgical unit. Some trusts are defined as 'tertiary trusts' (trusts specialising in diagnosis and treatment of specific conditions), and it is unlikely that patients will be first seen in these organisations. As a result, the resection rates for tertiary trusts can appear to be very high or very low and should be interpreted cautiously. More information on the calculation of resection rates is available in the NLCA methodology reports available at www.rcplondon.ac.uk/NLCA.

Results

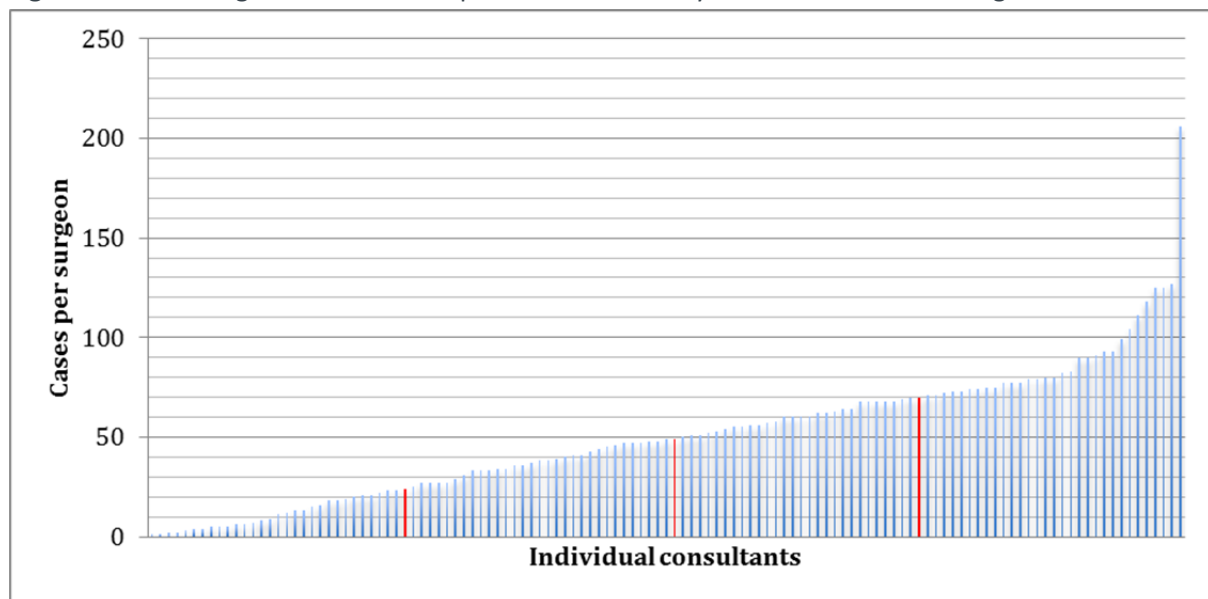
Total number of operations for lung cancer

The NLCA cancer registry identified 5,936 lung cancer resections that took place within the NHS in England in 2015. These data were returned to surgical units for validation. The surgical units reviewed the data against their own records and returned 6,021 patient records. After exclusions (see below), 5,843 patients who had 5,936 resections were included in the final dataset for publication. This is a 4.9% year-on-year increase on the 5,657 resections in 5,542 patients reported in 2014.

Twenty-eight units performed lung cancer surgery in 2015. This is unchanged from our 2014 report, but we are aware that the Royal Devon and Exeter NHS Foundation Trust has subsequently stopped providing this surgery. We were not able to locally validate data for this trust, but every other surgical unit validated their data. The median number of resections per unit was 185 (interquartile range (IQR) 141–264), and ranged from 49 to 507 resections.

A total of 123 consultant surgeons were identified as performing lung cancer resections in 2015. The median number of cases performed by each surgeon was 49 (IQR 24.5–70.5), ranging from 1 to 206 as shown in Fig 1. The number of cases performed per surgeon is rising; in 2012 the median number of cases per surgeon was 30.

Fig 1 Number of lung cancer resections performed in 2015 by individual consultant surgeons



Quartiles marked in red, n=123

There are many possible reasons for high and low numbers of cases. Surgeons starting in practice, moving hospital or retiring during the year may record low numbers. Surgeons may have other commitments, for example research, university or management responsibilities. They may do clinical work in another subspecialty, commonly cardiac surgery. Others will work part time, or will have a special interest in another area of thoracic surgery (for example, sarcoma or oesophageal surgery), which reduces the time that they spend carrying out operations for primary lung cancer.

Reasons for cases not being included in the analyses

The data returned from surgical units were examined to ensure data quality and coverage. The reasons for exclusion included: invalid or inconsistent identifier, surgery that did not take place in 2015, no valid surgery recorded, no MDT or first hospital information, and duplicate records. Where patients had multiple

operations recorded (either on the same or different days), these were all included, identified by the same patient identifier.

Breakdown of cases by pathological classification

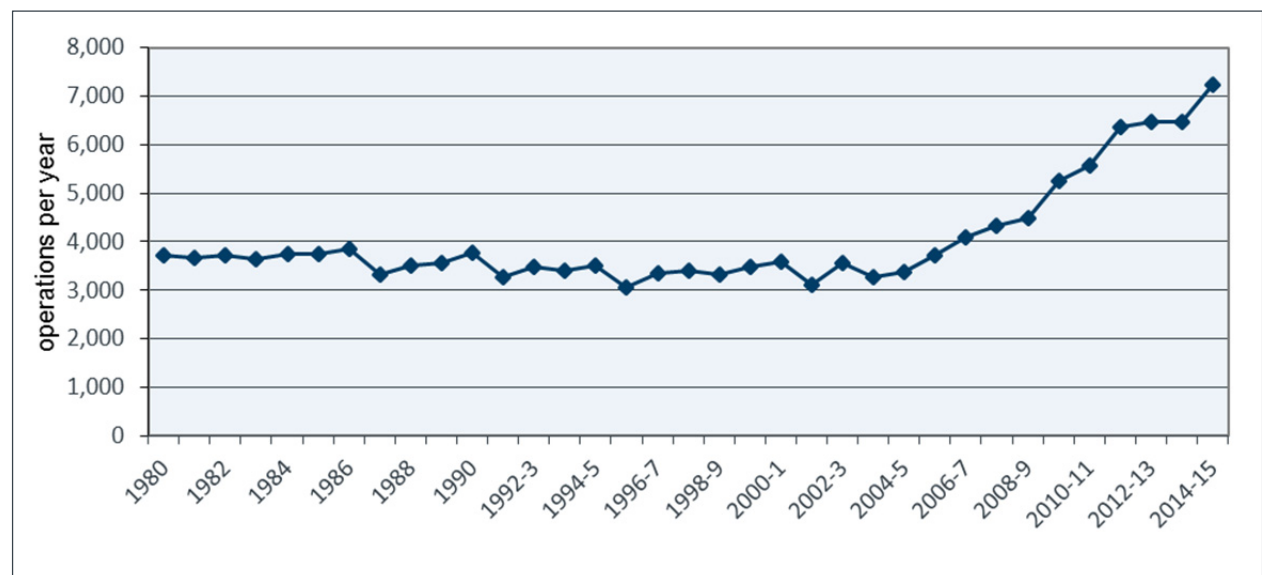
Table 1 Breakdown of patients by cancer type

| Lung cancer type | Number of resections | Proportion of patients (%) |
|----------------------------|----------------------|----------------------------|
| Non-small-cell lung cancer | 5,499 | 92.6% |
| Carcinoid | 343 | 5.8% |
| Small-cell lung cancer | 94 | 1.6% |

Table 1 shows the number of resections carried out by lung cancer type. We registered a slight increase in carcinoid tumour resections, up from 226 cases (4% of total) in 2014.

The number of lung cancer operations has continued to increase over the past decade. The information in Fig 2 uses data from the whole of the UK and Ireland, collected by the SCTS thoracic registry project. The numbers are therefore higher than the LCCOP figures, which apply only to operations within NHS hospitals in England.

Fig 2 Changes in number of lung cancer operations by year from 1980 to 2015*



*Source: SCTS thoracic registry project

Demographics

Analysis of the data submitted to the audit allows a detailed description of the population of patients who had lung cancer surgery in 2015:

- Age**
 The median age of a patient having a lung cancer operation in 2015 was 69 years. The interquartile age range was 63–75 years.
- Sex**
 There were more female than male patients, as shown in Table 2.

Table 2 Number of patients by gender

| Gender | Number of patients having lung cancer resections | Proportion of patients (%) |
|--------|--|----------------------------|
| Male | 2,905 | 48.9 |
| Female | 3,031 | 51.1 |

Performance status

The World Health Organization (WHO) performance status (PS) is a standardised method of assessing a patient's overall fitness. The score ranges from 0 (no symptoms) to 4 (bed-bound). Although simple to calculate, the PS correlates well with the risk of complications after surgery, with less fit patients at higher risk. 91% of patients undergoing surgery whose PS was recorded had a score of 0 or 1.

Some units might be operating on patient populations with higher rates of ill health than others. For this reason, the analyses have been adjusted to account for this variable.

The PS data are only partially complete (see Table 3). Following a change of data collection methodology in 2014, the recording of performance status has been lower than in previous years. This has been a focus for improvement by lung cancer teams and this year we have seen lower levels of missing data (23%) than in 2014 (43.8%). We anticipate that this will improve further in the next report to only approximately 10% missing data.

Table 3 Patients with a recorded performance status (of 5,936 resections)

| Performance status | Number of patients | Proportion of patients (%) |
|--------------------|--------------------|----------------------------|
| 0 | 2,021 | 34.1 |
| 1 | 2,068 | 34.8 |
| 2 | 416 | 7.0 |
| 3 | 57 | 1.0 |
| 4 | 7 | 0.1 |
| Missing | 1,367 | 23.0 |

Types of lung cancer operations performed in 2015

Lobectomy is the treatment of choice for early lung cancer. Pneumonectomy (removal of the whole lung) is reserved for tumours that cannot be removed by lobectomy, generally because of their size or position. These are bigger operations, which can have a greater impact on patients, and carry a higher mortality risk. Sublobar operations, such as wedge or segmental resections, are usually reserved for less fit patients who may not tolerate lobectomy, and for very early or multiple-site tumours. The proportion of surgical operation types performed is shown in Table 4 and Fig 3. The commonest operations were lobectomies or bilobectomies, including sleeve lobectomies.

Five per cent of operations were pneumonectomies. The pneumonectomy rate varied across hospitals, with a median rate of 4.5 (IQR 3–7). Two smaller units performed no pneumonectomies in 2015.

We are not certain that the very small 'complex' group is capturing all relevant procedures. This grouping is intended to capture extended operations, for example lung resections with removal of portions of chest wall or other local structures for advanced tumours. However, the SCTS thoracic registry, which collects data on broadly the same patient group, reported 138 lung resections with chest wall (one form of complex operation) for lung cancer in England in 2015–16, but only 11 complex cases were coded in LCCOP. It is possible that some complex cases are being reported in the larger procedure groups.

Fig 4 shows survival at 30 days, 90 days and 1 year by the type of operation performed in 2015.

Fig 3 Types of lung resection performed as a percentage of all lung cancer operations 2013–15

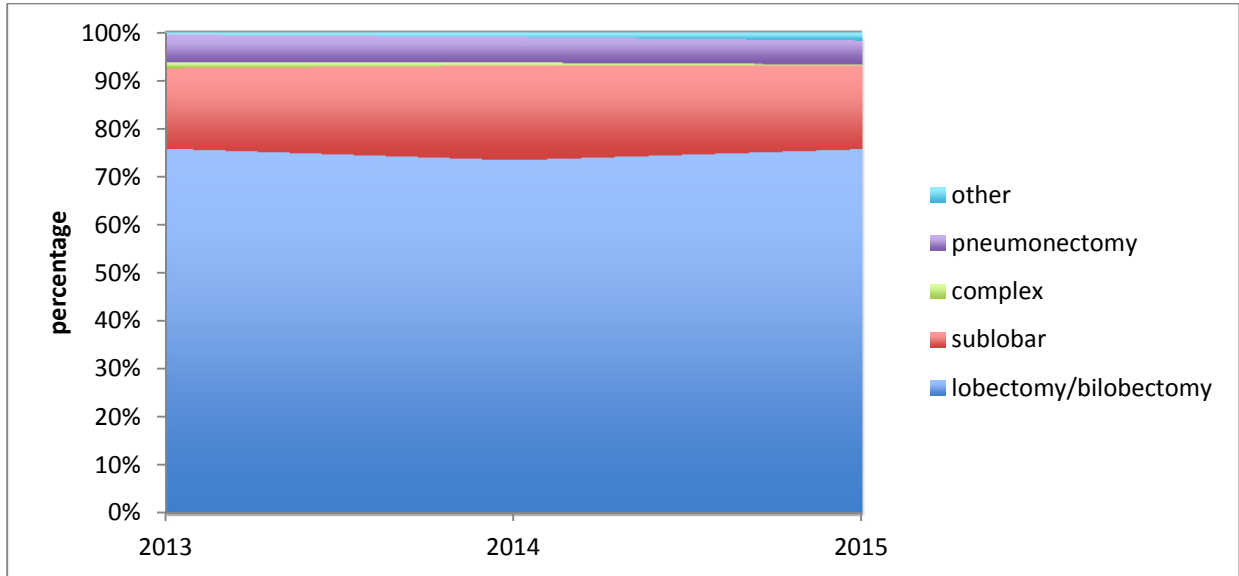


Table 4 Types of lung cancer surgery performed in 2015, 2014 and 2013

| Type of surgery | Proportion performed in 2015 (%) | Proportion performed in 2014 (%) | Proportion performed in 2013 (%) |
|--|----------------------------------|----------------------------------|----------------------------------|
| Bilobectomy / lobectomy / sleeve resection | 75.8 | 73.5 | 75.9 |
| Wedge and multiple wedge resection / segmental resection | 17.4 | 19.7 | 16.7 |
| Complex resections | 0.2 | 0.6 | 1.2 |
| Pneumonectomy | 5.0 | 5.3 | 5.8 |
| Other resections | 1.6 | 0.9 | 0.4 |

Fig 4 Survival at 30 days, 90 days and 1 year by type of surgery performed in 2015

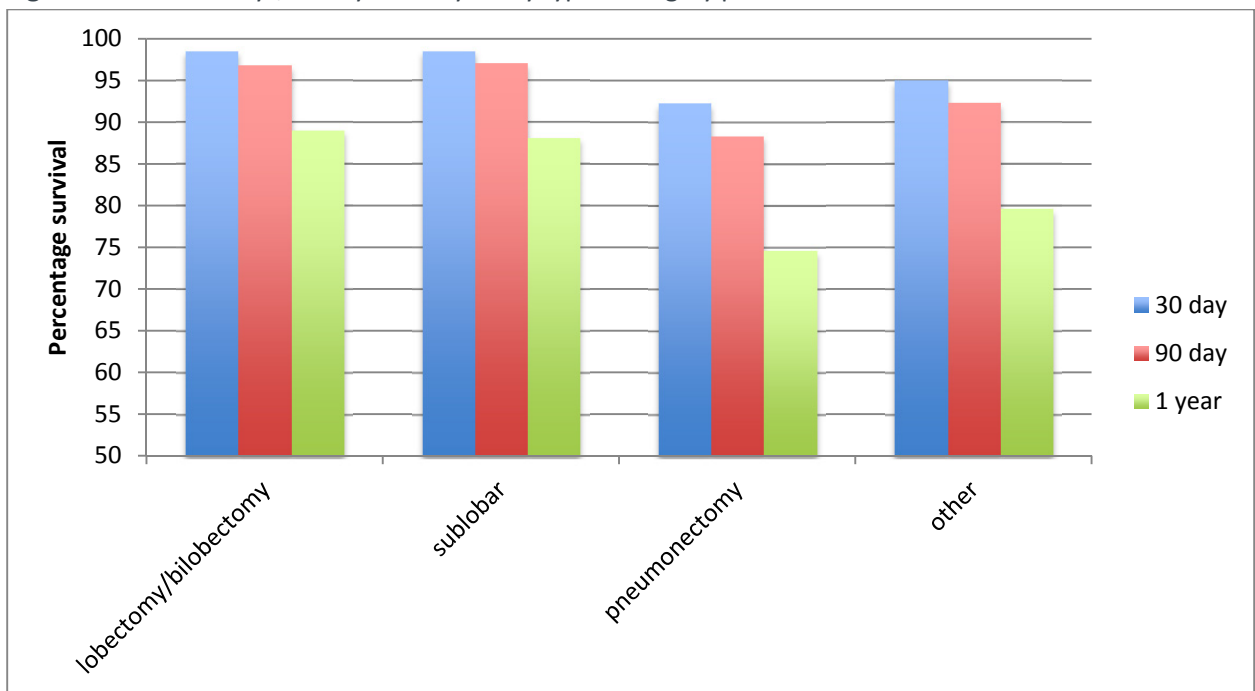


Table 5 Survival rates after surgery by procedure performed in 2015

| Type of surgery | Number performed | 30-day survival (%) | 90-day survival (%) | 1-year survival (%) |
|---|------------------|---------------------|---------------------|---------------------|
| Bilobectomy / lobectomy / sleeve resection | 4,498 | 98.5 | 96.8 | 89.0 |
| Wedge and multiple wedge resection / segmental resection | 1,031 | 98.5 | 97.0 | 88.1 |
| Carinal resection / lung resection with resection of chest wall | 11 | 100.0 | 100.0 | 100.0 |
| Pneumonectomy | 298 | 92.3 | 88.4 | 74.6 |
| Other resections | 98 | 95.0 | 92.3 | 79.6 |

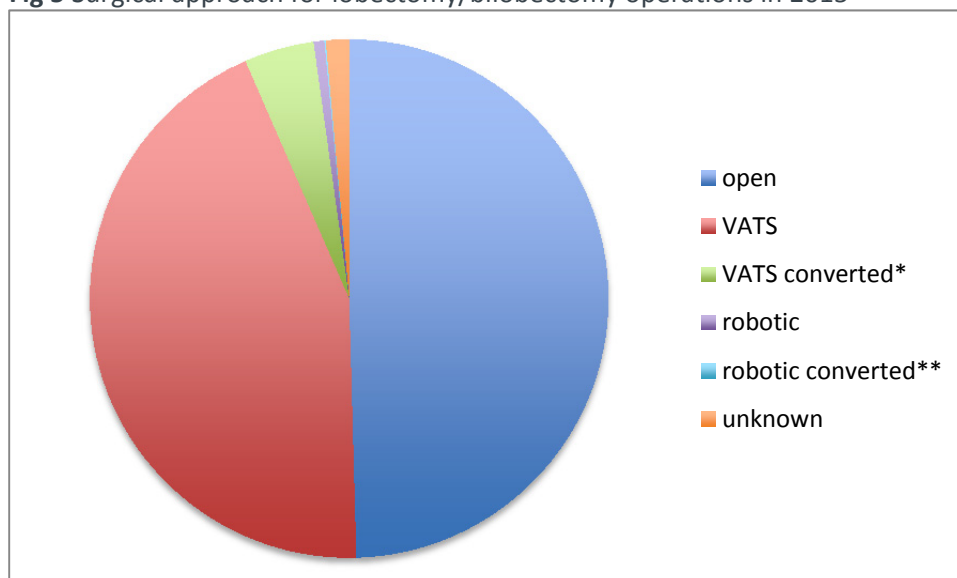
The lower survival rates seen after pneumonectomy compared with lesser resections (shown in Table 5) have been seen in similar databases, including the SCTS thoracic registry project (www.scts.org: SCTS in hospital survival UK and Ireland 2010–15 pneumonectomy 94.7, open lobe 97.9, VATS lobe 99.0).

Surgical approach for lobectomy and bilobectomy operations

This year, for the first time, we have data on the approach used for the commonest kind of lung cancer surgery – lobectomy and bilobectomy (Fig 5 and Table 6). We have classified cases as having been performed via open surgery (usually using a cut between the ribs and spreading of the ribs to gain access to the chest), by VATS (video-assisted thoracic surgery, using cameras and specific instruments to operate using 1–4 small incisions) or with the assistance of a surgical robot (using incisions similar to VATS surgery). Two other groups record conversions during an operation from a robotic or VATS approach to open surgery.

A total of 9.0% of the 2,425 operations commenced by VATS, and 11.8% of the 34 cases commenced robotically were converted to an open approach during surgery.

Fig 5 Surgical approach for lobectomy/bilobectomy operations in 2015



*VATS converted = VATS operations converted to an open approach

**robotic converted = robotic operations converted to an open approach during surgery

Table 6 Lobectomy: unadjusted length of stay and survival by surgical approach

| Approach | Number of resections (% of total) | Median length of stay (IQR) | % survival 30 days | % survival 90 days | % survival 1 year |
|----------------------------|-----------------------------------|-----------------------------|--------------------|--------------------|-------------------|
| Open | 2,229 (49.6) | 7 (5–10) | 97.9 | 95.8 | 86.8 |
| Completed VATS | 1,974 (43.9) | 5 (4–8) | 99.1 | 97.8 | 91.3 |
| VATS converted to open | 196 (4.3) | 8 (5.5–12) | 99.5 | 96.9 | 88.3 |
| Completed robotic | 30 (0.7) | 5 (4–7) | 96.7 | 96.7 | 93.3 |
| Robotic converted to open* | 4 (<0.1) | - | - | - | - |
| Unknown | 65 (1.4) | 8 (6–10) | 96.9 | 95.4 | 90.8 |

*outcomes not presented due to the very small numbers available for analysis

We have not adjusted these data to account for patient factors. It is quite likely that patients selected for VATS and robotic surgery were systematically different from patients who had open surgery, for example they may have had smaller tumours. We plan to look at this in subsequent reports.

Survival rates

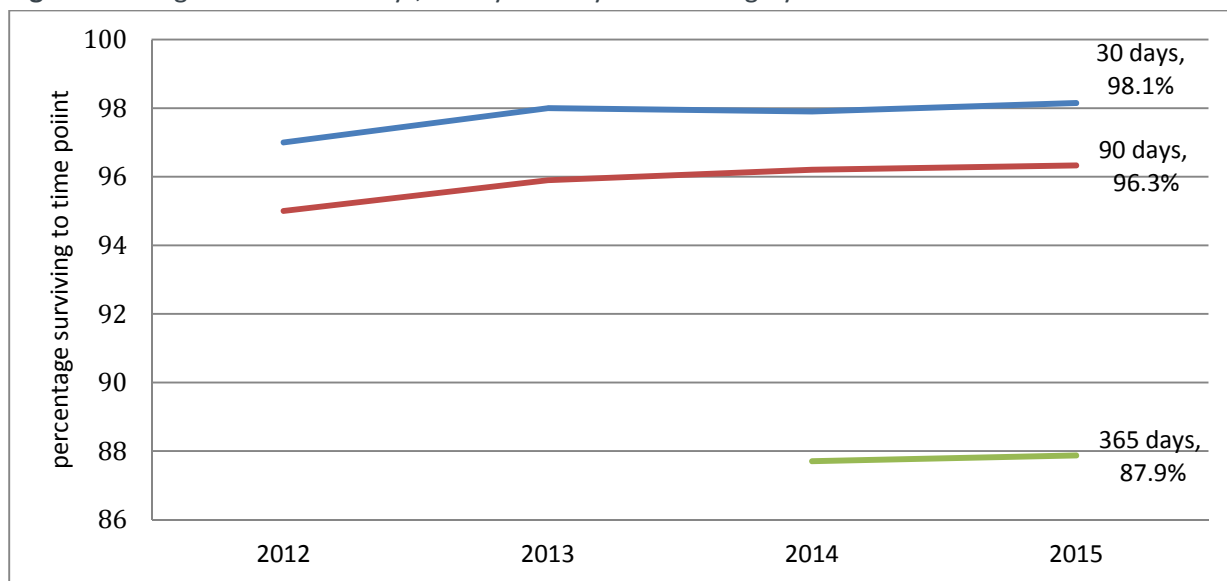
Results show that survival rates following lung cancer surgery in England are high. In 2015, 98.1% of patients were alive at 30 days and 96.3% were alive at 90 days after surgery, compared with 97.9% and 96.2% respectively in 2014 (Fig 6).

In total, 720 patients died within 1 year of lung resection, giving a national 1-year survival rate of 87.9%, compared with 87.7% in 2014.

We expect that other factors outside the surgical procedure itself also affect 1-year survival, for example access to adjuvant treatments such as chemotherapy and radiotherapy, and the availability of supportive care.

These results (Fig 6) are similar to those in our last report. It is encouraging that, despite operating on more patients, survival rates at all measured time points continue to increase slightly. Changes in perioperative care, for example increasing rates of minimal access surgery, modern regional anaesthesia or enhanced recovery pathways, might have contributed to this.

Fig 6 Percentage survival at 30 days, 90 days and 1 year after surgery 2012–2015

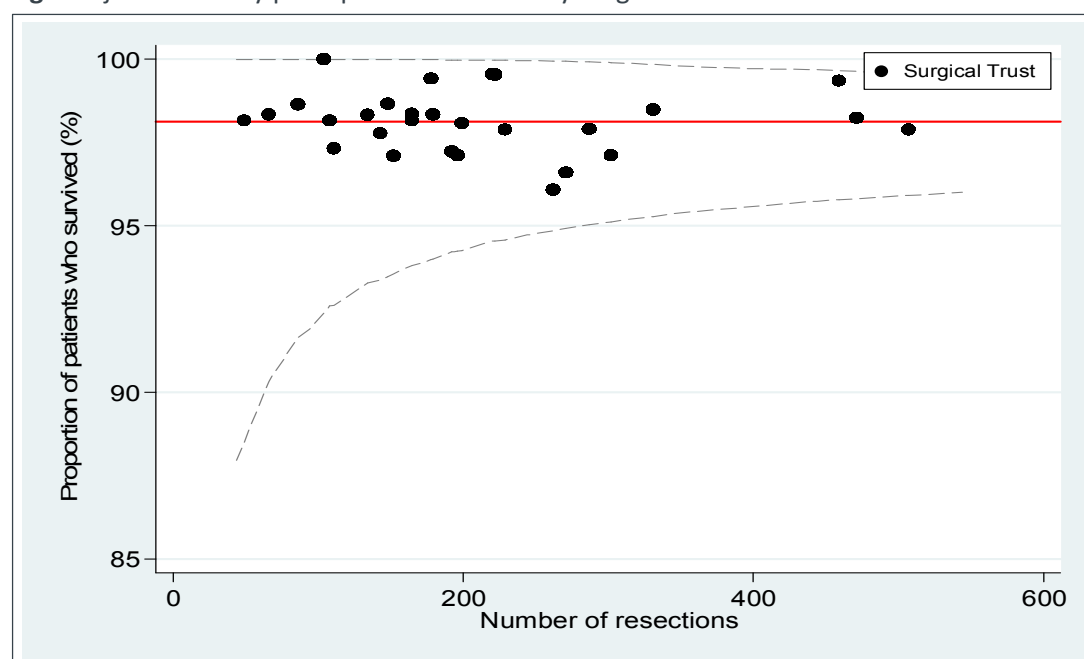


Survival rates were similar across all surgical units. Figs 7 and 8 show that all units are within expected levels of survival at both 30 and 90 days.

Figs 7, 8 and 9 are funnel plots showing adjusted 30-day, 90-day and 1 year survival rates by surgical unit. The dotted lines signify the level of survival that would be outside the expected range. The funnel plot does not include units with 100% survival.

The adjusted results include ORs of 30-day and 90-day survival in specified trusts, relative to the whole LCCOP resection population.

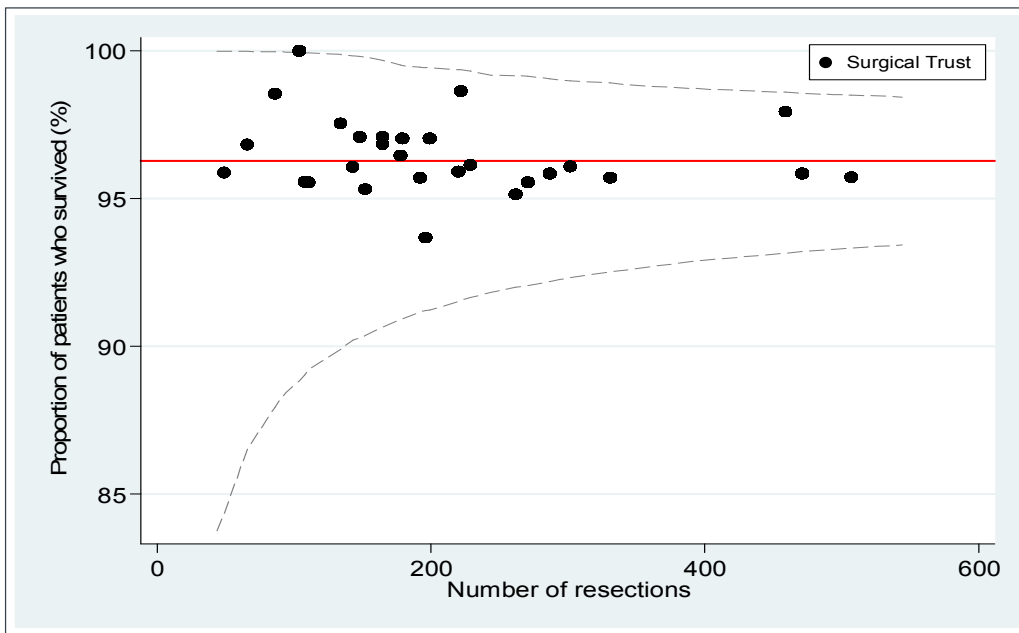
Fig 7 Adjusted 30-day postoperative survival by surgical unit



The plotted control limits represent 99.8% confidence intervals of the adjusted odds ratios. The Y axis shows adjusted survival.

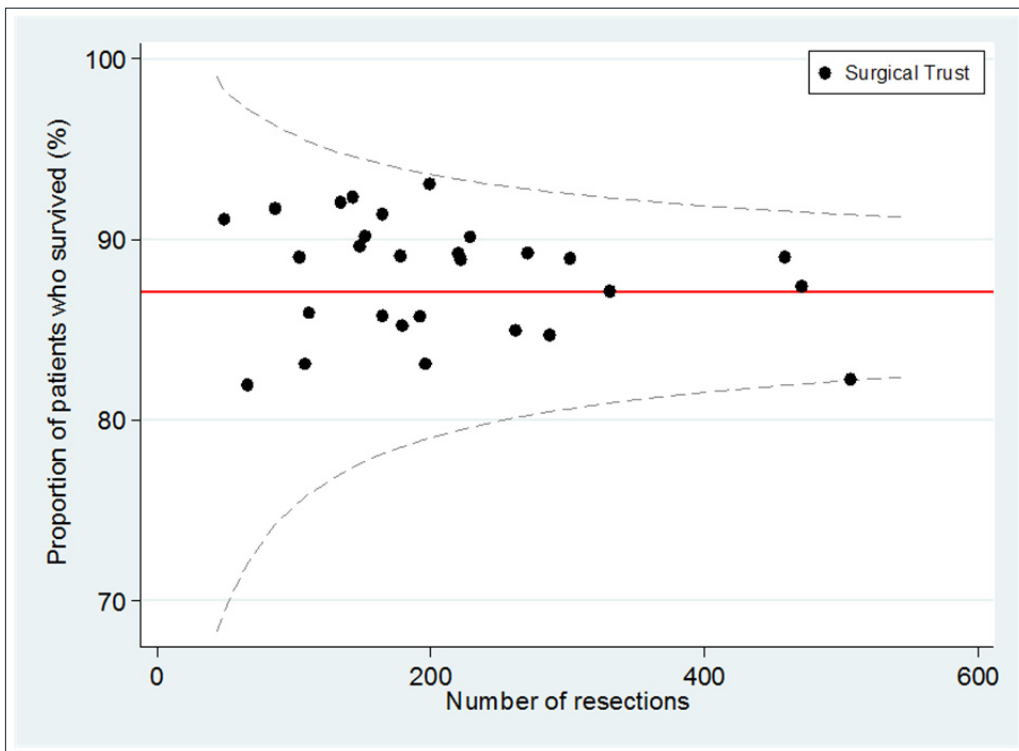
The 30-day survival data was adjusted for the composition of the population in terms of age, sex, performance status, stage, laterality, FEV1 percentage, comorbidity and socioeconomic status.

Fig 8 Adjusted 90-day postoperative survival by surgical unit



The plotted control limits represent 99.8% confidence intervals of the adjusted odds ratios. The Y axis shows adjusted survival. The 90-day survival data was adjusted for the composition of the population in terms of age, sex, performance status, stage, laterality, FEV1 percentage, comorbidity and socioeconomic status.

Fig 9 Adjusted 1-year postoperative survival by surgical unit



The plotted control limits represent 99.8% confidence intervals of the adjusted odds ratios. The Y axis shows adjusted survival.

The 1-year survival data was adjusted for the composition of the population in terms of age, sex, performance status, stage, laterality, FEV1 percentage, comorbidity and socioeconomic status.

Length of stay

This is the number of nights that patients spend in hospital during their admission for lung cancer surgery.

Length of stay data were available for 4,595 resections; 78.64% of the 5,843 procedures performed. Median length of stay for these 4,595 patients was 6 days, with an interquartile range of 4–9 days. In 2014 the median length of stay was also 6 days (IQR 5–10).

The length of stay data used were obtained from HES (Hospital Episode Statistics) data. Not all cases included in LCCOP mapped to records in HES and therefore the data are incomplete. The percentage completeness is given for each trust in Appendix 2.

Despite the data being incomplete, the length of stay information is important to patients and their families. It is also related to the cost of treatment.

Detailed results, listed by hospital trust, are available on www.scts.org.

Appendix 1: Early outcomes for surgical resection units in England

| Surgical trust | Trust code | Number of resections | 30-day survival adjusted (%) | 30-day survival significance | 90-day survival adjusted (%) | 90-day survival significance |
|--|------------|----------------------|------------------------------|------------------------------|------------------------------|------------------------------|
| Barts Health NHS Trust | R1H | 148 | 98.7 | → | 97.1 | → |
| Basilston and Thurrock University Hospital NHS FT | RDD | 104 | 100.0 | → | 100.0 | → |
| Blackpool Teaching Hospitals NHS FT | RXL | 178 | 99.4 | → | 96.5 | → |
| Guy's and St Thomas' NHS FT | RJ1 | 459 | 99.4 | → | 97.9 | → |
| Heart of England NHS FT | RR1 | 271 | 96.6 | → | 95.6 | → |
| Hull and East Yorkshire Hospitals NHS Trust | RWA | 165 | 98.2 | → | 97.1 | → |
| Imperial College Healthcare NHS Trust | RYJ | 152 | 97.1 | → | 95.3 | → |
| Leeds Teaching Hospitals NHS Trust | RR8 | 302 | 97.1 | → | 96.1 | → |
| Liverpool Heart and Chest Hospital NHS Foundation Trust | LLCU | 507 | 97.9 | → | 95.7 | → |
| Norfolk and Norwich University Hospitals NHS FT | RM1 | 143 | 97.8 | → | 96.1 | → |
| Nottingham University Hospital NHS Trust | RX1 | 229 | 97.9 | → | 96.1 | → |
| Oxford University Hospitals NHS Trust | RTH | 111 | 97.3 | → | 95.6 | → |
| Papworth Hospital NHS FT | RGM | 165 | 98.4 | → | 96.8 | → |
| Plymouth Hospitals NHS Trust | RK9 | 86 | 98.6 | → | 98.6 | → |
| Royal Brompton and Harefield NHS FT | RT3 | 331 | 98.5 | → | 95.7 | → |
| Royal Devon and Exeter NHS FT | RH8 | 49 | 98.2 | → | 95.9 | → |
| Sheffield Teaching Hospitals NHS FT | RHQ | 220 | 99.6 | → | 95.9 | → |
| South Tees Hospitals NHS FT | RTR | 134 | 98.3 | → | 97.5 | → |
| St George's Healthcare NHS Trust | RJ7 | 199 | 98.1 | → | 97.0 | → |
| The Newcastle Upon Tyne Hospitals NHS FT | RTD | 262 | 96.1 | → | 95.1 | → |
| The Royal Wolverhampton NHS Trust | RL4 | 108 | 98.2 | → | 95.6 | → |
| University College London Hospitals NHS FT | RRV | 179 | 98.4 | → | 97.0 | → |
| University Hospitals of North Midlands NHS Trust | RJE | 196 | 97.1 | → | 93.7 | → |
| University Hospital of South Manchester NHS FT | RM2 | 471 | 98.2 | → | 95.9 | → |
| University Hospital Southampton NHS FT | RHM | 287 | 97.9 | → | 95.8 | → |
| University Hospitals Bristol NHS FT | RA7 | 222 | 99.6 | → | 98.7 | → |
| University Hospitals Coventry and Warwickshire NHS Trust | RKB | 66 | 98.3 | → | 96.8 | → |
| University Hospitals of Leicester NHS Trust | RWE | 192 | 97.2 | → | 95.7 | → |
| England | | 5,936 | 98.1 | | 96.3 | |

→ Not statistically significantly different to expected

Appendix 2: One-year survival and length of stay after surgical resection in England

| Surgical trust | Trust code | 1-year survival adjusted (%) | 1-year survival significance | Median length of stay | IQR* | Number of records available | % completeness of length of stay data |
|---|------------|------------------------------|------------------------------|-----------------------|---------|-----------------------------|---------------------------------------|
| Barts Health NHS Trust | R1H | 89.6 | → | 8 | (6–11) | 117 | 79.1 |
| Basildon and Thurrock University Hospital NHS FT | RDD | 89.0 | → | 5 | (4.5–8) | 68 | 65.4 |
| Blackpool Teaching Hospitals NHS FT | RXL | 89.1 | → | 7 | (6–11) | 145 | 81.5 |
| Guy's and St Thomas' NHS FT | RJ1 | 89.0 | → | 6 | (4–9) | 242 | 52.7 |
| Heart of England NHS FT | RR1 | 89.3 | → | 5 | (3–7) | 199 | 73.4 |
| Hull and East Yorkshire Hospitals NHS Trust | RWA | 85.8 | → | 7 | (5–9) | 92 | 55.8 |
| Imperial College Healthcare NHS Trust | RYJ | 90.2 | → | 8 | (5–11) | 129 | 84.9 |
| Leeds Teaching Hospitals NHS Trust | RR8 | 89.0 | → | 6 | (4–8) | 236 | 78.1 |
| Liverpool Heart and Chest Hospital NHS Foundation Trust** | LLCU | 82.3 | → | 6 | (5–9) | 449 | 88.6 |
| Norfolk and Norwich University Hospitals NHS FT | RM1 | 92.4 | → | 5.5 | (4–7) | 130 | 90.9 |
| Nottingham University Hospital NHS Trust | RX1 | 90.1 | → | 6 | (5–9) | 210 | 91.7 |
| Oxford University Hospitals NHS Trust | RTH | 86.0 | → | 5 | (4–8) | 101 | 91.0 |
| Papworth Hospital NHS FT | RGM | 91.4 | → | 5 | (4–9) | 148 | 89.7 |
| Plymouth Hospitals NHS Trust | RK9 | 91.7 | → | 8.5 | (7–13) | 74 | 86.0 |
| Royal Brompton and Harefield NHS FT | RT3 | 87.1 | → | 7 | (5–10) | 278 | 84.0 |
| Royal Devon and Exeter NHS FT | RH8 | 91.1 | → | 7 | (4–9.5) | 48 | 98.0 |
| Sheffield Teaching Hospitals NHS FT | RHQ | 89.2 | → | 6 | (4–8) | 187 | 85.0 |
| South Tees Hospitals NHS FT | RTR | 92.0 | → | 6 | (4–10) | 111 | 82.8 |
| St George's Healthcare NHS Trust | RJ7 | 93.1 | → | 5 | (3–8) | 64 | 32.2 |
| The Newcastle Upon Tyne Hospitals NHS FT | RTD | 85.0 | → | 7 | (5–10) | 228 | 87.0 |
| The Royal Wolverhampton NHS Trust | RL4 | 83.1 | → | 6 | (5–9.5) | 68 | 63.0 |
| University College London Hospitals NHS FT | RRV | 85.2 | → | 7 | (5–10) | 161 | 89.9 |
| University Hospital of North Midlands NHS Trust | RJE | 83.1 | → | 6 | (5–9) | 166 | 84.7 |
| University Hospital of South Manchester NHS FT | RM2 | 87.4 | → | 5 | (4–8) | 318 | 67.5 |
| University Hospital Southampton NHS FT | RHM | 84.7 | → | 4 | (3–6) | 245 | 85.4 |
| University Hospitals Bristol NHS FT | RA7 | 88.9 | → | 5 | (4–8) | 189 | 85.1 |

| Surgical trust | Trust code | 1-year survival adjusted (%) | 1-year survival significance | Median length of stay | IQR* | Number of records available | % completeness of length of stay data |
|--|------------|------------------------------|------------------------------|-----------------------|--------------|-----------------------------|---------------------------------------|
| University Hospitals Coventry and Warwickshire NHS Trust | RKB | 82.0 | → | 8 | (6–12) | 42 | 63.6 |
| University Hospitals of Leicester NHS Trust | RWE | 85.7 | → | 6.5 | (5–10) | 150 | 78.1 |
| England | | 87.9 | | 6 | (4–9) | 4,595 | |

→ Not statistically significantly different to expected ↓ Significantly worse than expected

*IQR = interquartile range

**Survival at the Liverpool Heart and Chest Hospital was lower than expected (defined as an odds ratio for survival outside 99.8% confidence intervals) at 1 year, but within expected levels at 30 and 90 days after surgery. Please see further comment on this metric under 'Survival rate' in the 'Background' section of this report.

Appendix 3: Resection rates by surgical trust and by trust first seen, from the NLCA main report (2015 data)

| Surgical trust | Surgical trust code | Lung MDT host trust | MDT trust code | All cases per MDT | MDT resection rate (all comers) | Resection rate significance** |
|---|---------------------|--|---------------------------------------|-------------------|---------------------------------------|-------------------------------|
| Liverpool Heart and Chest Hospital NHS FT | LHCH | Warrington and Halton Hospital NHS FT | RWW | 210 | 19.5 | ↑ |
| | | | RJR | 189 | 20.1 | ↑ |
| | | | REM | 334 | 23.1 | ↑ |
| | | | RBL | 341 | 18.5 | ↑ |
| | | | LLCU | 462 | 21.6 | ↑ |
| | | | RVY | 176 | 13.6 | ↑ |
| | | | RBN | 304 | 13.2 | ↑ |
| | | | RTH | 370 | 25.9 | ↑ |
| | | | RN5 | 178 | 18.5 | ↑ |
| | | | RHK | 309 | 20.4 | ↑ |
| Heart of England NHS FT | RR1 | University Hospitals Birmingham NHS FT | RWP | 356 | 16.3 | ↑ |
| | | | RXK | 248 | 11.3 | ↑ |
| | | | RBK | 172 | 11.6 | ↑ |
| | | | RLQ | 100 | 14.0 | ↑ |
| | | | RR1 | 513 | 17.7 | ↑ |
| | | | RTE | 353 | 16.7 | ↑ |
| | | | R1K | 195 | 25.1 | ↑ |
| | | | RFW | 72 | 23.6 | ↑ |
| | | | RYJ | 338 | 21.9 | ↑ |
| | | | RJ1 | 462 | 35.3 | ↑ |
| Imperial College Healthcare NHS Trust | RYJ | London North West Healthcare NHS Trust | R1K | 195 | 25.1 | ↑ |
| | | | RFW | 72 | 23.6 | ↑ |
| | | | RYJ | 338 | 21.9 | ↑ |
| | | | RJ1 | 462 | 35.3 | ↑ |
| | | | RJ2 | 203 | 6.4 | ↓ |
| | | | RHW | 191 | 13.6 | ↑ |
| | | | RJZ | 203 | 10.3 | ↓ |
| | | | RWF | 266 | 17.7 | ↑ |
| | | | RXH | 280 | 12.5 | ↑ |
| | | | RTK | 181 | 17.7 | ↑ |
| Guy's and St Thomas' NHS FT | RJ1 | Guy's and St Thomas' NHS FT | RJ1 | 462 | 35.3 | ↑ |
| | | | RJ2 | 203 | 6.4 | ↓ |
| | | | RHW | 191 | 13.6 | ↑ |
| | | | RJZ | 203 | 10.3 | ↓ |
| | | | RWF | 266 | 17.7 | ↑ |
| | | | RXH | 280 | 12.5 | ↑ |
| | | | RTK | 181 | 17.7 | ↑ |
| | | | RVV | 479 | 7.5 | ↓ |
| | | | RJ1 | 462 | 35.3 | ↑ |
| | | | Imperial College Healthcare NHS Trust | RYJ | Imperial College Healthcare NHS Trust | RYJ |
| RJ1 | 462 | 35.3 | | | | ↑ |
| RJ2 | 203 | 6.4 | | | | ↓ |
| RHW | 191 | 13.6 | | | | ↑ |
| RJZ | 203 | 10.3 | | | | ↓ |
| RWF | 266 | 17.7 | | | | ↑ |
| RXH | 280 | 12.5 | | | | ↑ |
| RTK | 181 | 17.7 | | | | ↑ |
| RVV | 479 | 7.5 | | | | ↓ |
| RJ1 | 462 | 35.3 | | | | ↑ |

| Surgical trust | Surgical trust code | Lung MDT host trust | MDT trust code | All cases per MDT | MDT resection rate (all comers) | Resection rate significance** |
|---|---------------------|--|----------------|-------------------|---------------------------------|-------------------------------|
| University Hospitals of Leicester NHS Trust | RWE | East Sussex Healthcare NHS Trust | RXC | 318 | 12.6 | → |
| | | Kettering General Hospital NHS FT | RNQ | 216 | 21.3 | ← |
| | | University Hospitals of Leicester NHS Trust | RWE | 555 | 14.1 | → |
| | | Burton Hospitals NHS FT | RJF | 141 | 24.1 | ← |
| | | Peterborough and Stamford Hospitals NHS FT | RGN | 207 | 12.1 | → |
| | | Northampton General Hospital NHS Trust | RNS | 178 | 18.5 | ← |
| The Newcastle Upon Tyne Hospitals NHS FT | RTD | Newcastle Upon Tyne Hospitals NHS FT | RTD | 405 | 15.1 | → |
| | | County Durham and Darlington NHS FT | RXP | 471 | 10.4 | → |
| | | North Cumbria University Hospitals NHS Trust | RNL | 248 | 15.7 | → |
| | | Northumbria Healthcare NHS FT | RTF | 411 | 12.9 | → |
| | | City Hospitals Sunderland NHS FT | RLN | 367 | 12.8 | → |
| | | South Tyneside NHS FT | RE9 | 137 | 11.7 | → |
| | | Gateshead Health NHS FT* | RR7 | 235 | 10.2 | → |
| Plymouth Hospitals NHS Trust | RK9 | Royal Cornwall Hospitals NHS Trust | REF | 285 | 8.4 | → |
| | | South Devon Healthcare NHS FT | RA9 | 213 | 9.4 | → |
| | | Plymouth Hospitals NHS Trust | RK9 | 333 | 13.8 | → |
| Hull and East Yorkshire Hospitals NHS Trust | RWA | Hull and East Yorkshire Hospitals NHS Trust | RWA | 417 | 18.9 | → |
| | | Northern Lincolnshire and Goole Hospitals NHS FT | RJL | 319 | 13.5 | → |
| | | York Hospitals NHS FT | RCB | 333 | 12.0 | → |
| University Hospitals Bristol NHS FT | RA7 | University Hospitals Bristol NHS FT | RA7 | 178 | 24.2 | → |
| | | Gloucestershire Hospitals NHS FT | RTE | 353 | 16.7 | → |
| | | Royal United Hospital Bath NHS Trust | RD1 | 243 | 16.0 | → |
| | | North Bristol NHS Trust | RVJ | 267 | 18.7 | → |
| | | Taunton and Somerset NHS FT | RBA | 204 | 15.2 | → |
| | | Weston Area Health NHS Trust | RA3 | 99 | 6.1 | → |
| | | Yeovil District Hospital NHS FT | RA4 | 113 | 15.0 | → |
| Blackpool Teaching Hospitals NHS FT | RXL | Blackpool Teaching Hospitals NHS FT | RXL | 299 | 17.4 | → |
| | | University Hospitals of Morecambe Bay | RTX | 272 | 14.7 | → |

| Surgical trust | Surgical trust code | Lung MDT host trust | MDT trust code | All cases per MDT | MDT resection rate (all comers) | Resection rate significance** |
|---|---------------------|---|----------------|-------------------|---------------------------------|-------------------------------|
| Surgical trust | | East Lancashire Hospitals NHS Trust | RXR | 339 | 14.7 | → |
| | | Lancashire Teaching Hospitals NHS FT | RXN | 313 | 15.0 | → |
| Basildon and Thurrock University Hospitals NHS FT | RDD | Basildon and Thurrock University Hospitals NHS FT | RDD | 254 | 13.0 | → |
| | | Colchester Hospital University NHS FT | RDE | 318 | 12.6 | → |
| | | Southeast University Hospitals NHS FT | RAJ | 258 | 12.4 | → |
| | | Mid Essex Hospital Services NHS Trust | RQ8 | 223 | 16.6 | → |
| The Royal Wolverhampton NHS Trust | RL4 | The Royal Wolverhampton NHS Trust | RL4 | 269 | 22.3 | → |
| | | Worcestershire Acute Hospitals NHS Trust | RWP | 356 | 16.3 | → |
| | | The Dudley Group NHS FT | RNA | 249 | 12.9 | → |
| Norfolk and Norwich University Hospitals NHS FT | RM1 | Ipswich Hospital NHS Trust | RGQ | 202 | 11.4 | → |
| | | James Paget University Hospitals NHS FT | RGP | 202 | 12.9 | → |
| | | Queen Elizabeth Hospital King's Lynn NHS FT | RCX | 181 | 8.8 | → |
| Sheffield Teaching Hospitals NHS FT | RHQ | Norfolk and Norwich University Hospitals NHS FT | RM1 | 431 | 16.0 | → |
| | | Chesterfield Royal Hospital NHS FT | RFS | 198 | 13.6 | → |
| | | Barnsley Hospital NHS FT | RFF | 188 | 14.4 | → |
| | | Rotherham NHS FT | RFR | 177 | 14.7 | → |
| | | Sheffield Teaching Hospitals NHS FT | RHQ | 514 | 16.0 | → |
| Papworth Hospital NHS FT* | RGM | Doncaster and Bassetlaw NHS FT | RP5 | 403 | 14.9 | → |
| | | Papworth Hospital NHS FT* | RGM | 104 | 50.0 | → |
| | | West Suffolk NHS FT | RGR | 152 | 17.1 | → |
| | | East and North Hertfordshire NHS Trust | RWH | 270 | 5.6 | → |
| | | Peterborough and Stamford Hospitals NHS FT | RGN | 207 | 12.1 | → |
| Royal Brompton and Harefield NHS FT* | RT3 | Bedford Hospital NHS Trust | RC1 | 117 | 12.0 | → |
| | | Cambridge University Hospitals NHS FT | RGT | 185 | 15.1 | → |
| | | Hinchingbrooke Health Care NHS Trust | RQQ | 102 | 15.7 | → |
| | | Royal Brompton and Harefield NHS FT* | RT3 | 105 | 61.9 | → |
| | | West Hertfordshire Hospitals NHS Trust | RWG | 221 | 14.0 | → |
| Royal Free London NHS FT | RAL | 314 | 14.3 | → | | |

| Surgical trust | Surgical trust code | Lung MDT host trust | MDT trust code | All cases per MDT | MDT resection rate (all comers) | Resection rate significance** |
|--|---------------------|--|----------------|-------------------|---------------------------------|-------------------------------|
| Royal Devon and Exeter NHS FT | RH8 | Luton and Dunstable Hospital NHS FT | RC9 | 207 | 20.8 | → |
| | | Frimley Park Hospital NHS FT | RDU | 422 | 15.2 | → |
| | | Buckinghamshire Healthcare NHS Trust | RXQ | 211 | 13.7 | → |
| | | The Hillingdon Hospitals NHS FT | RAS | 105 | 7.6 | → |
| | | Colchester Hospital University NHS FT | RDE | 318 | 12.6 | → |
| | | Milton Keynes Hospital NHS FT | RD8 | 143 | 23.8 | → |
| | | Great Western Hospitals NHS FT | RN3 | 185 | 10.8 | → |
| | | East and North Hertfordshire NHS Trust | RWH | 270 | 5.6 | → |
| | | Chelsea and Westminster Hospital NHS FT | RQM | 88 | 9.1 | → |
| | | Royal Devon and Exeter NHS FT | RH8 | 302 | 10.6 | → |
| University Hospital of North Staffordshire NHS Trust | RJE | Northern Devon Healthcare NHS Trust | RBZ | 129 | 10.9 | → |
| | | University Hospital of North Staffordshire NHS Trust | RJE | 567 | 21.7 | → |
| | | Shrewsbury and Telford Hospital NHS Trust | RXW | 270 | 24.4 | → |
| Barts Health NHS Trust | R1H | Barts Health NHS Trust | R1H | 411 | 17.5 | → |
| | | Barking, Havering and Redbridge University Hospitals NHS Trust | RF4 | 364 | 14.6 | → |
| | | Homerton University Hospital NHS FT | RQX | 91 | 18.7 | → |
| St George's Healthcare NHS Trust | RJ7 | St George's Healthcare NHS Trust | RJ7 | 180 | 25.0 | → |
| | | Royal Surrey County Hospital NHS Trust | RA2 | 119 | 21.0 | → |
| | | Western Sussex Hospitals NHS Trust | RYR | 330 | 11.8 | → |
| | | Ashford and St Peter's Hospitals NHS FT | RTK | 181 | 17.7 | → |
| | | Kingston Hospital NHS Trust | RAX | 137 | 14.6 | → |
| | | Surrey and Sussex Healthcare NHS Trust | RTP | 221 | 10.0 | → |
| | | Epsom and St Helier University Hospitals NHS FT | RVR | 116 | 16.4 | → |
| | | Croydon Health Services NHS Trust | RJ6 | 135 | 16.3 | → |
| | | Royal Marsden NHS FT* | RPY | 248 | 6.9 | → |
| | | Harrigate and District NHS FT | RCD | 114 | 19.3 | → |
| Leeds Teaching Hospitals NHS Trust | RR8 | Mid-Yorkshire Hospitals NHS Trust | RXF | 488 | 15.4 | → |
| | | Leeds Teaching Hospitals NHS Trust | RR8 | 610 | 14.3 | → |

| Surgical trust | Surgical trust code | Lung MDT host trust | MDT trust code | All cases per MDT | MDT resection rate (all comers) | Resection rate significance** |
|--|---------------------|--|----------------|-------------------|---------------------------------|-------------------------------|
| | | Airedale NHS FT | RCF | 149 | 16.1 | ➔ |
| | | Calderdale and Huddersfield NHS FT | RWY | 281 | 14.6 | ➔ |
| | | Bradford Teaching Hospital NHS FT | RAE | 255 | 12.2 | ➔ |
| South Tees Hospital NHS FT | RTR | South Tees Hospital NHS FT | RTR | 393 | 14.0 | ➔ |
| | | North Tees and Hartlepool NHS FT | RVW | 318 | 16.7 | ➔ |
| | | County Durham and Darlington NHS FT | RXP | 471 | 10.4 | ➔ |
| University College London Hospitals NHS FT | RRV | North Middlesex University Hospital NHS Trust | RAP | 126 | 6.3 | ➔ |
| | | University College London Hospitals NHS FT | RRV | 198 | 36.4 | ➔ |
| | | The Whittington Hospital NHS Trust | RKE | 64 | 26.6 | ➔ |
| University Hospital of South Manchester NHS FT | RM2 | Pennine Acute Hospitals NHS Trust | RW6 | 681 | 16.7 | ➔ |
| | | University Hospital of South Manchester NHS FT | RM2 | 274 | 25.2 | ➔ |
| | | Central Manchester University Hospitals NHS FT | RW3 | 221 | 16.7 | ➔ |
| | | Stockport NHS FT | RWJ | 206 | 18.4 | ➔ |
| | | Bolton NHS FT | RMC | 251 | 16.7 | ➔ |
| | | Tameside Hospital NHS FT | RMP | 184 | 14.7 | ➔ |
| | | Salford Royal NHS FT | RM3 | 257 | 17.5 | ➔ |
| | | East Cheshire NHS Trust | RUN | 93 | 19.4 | ➔ |
| | | Wrightington, Wigan and Leigh NHS FT | RRF | 286 | 20.3 | ➔ |
| | | Mid Cheshire Hospitals NHS FT | RBT | 194 | 14.9 | ➔ |
| University Hospitals Coventry and Warwickshire NHS Trust | RRV | George Eliot Hospital NHS Trust | RLT | 109 | 11.0 | ➔ |
| | | University Hospitals Coventry and Warwickshire NHS Trust | RKB | 283 | 13.8 | ➔ |
| | | South Warwickshire NHS FT | RJC | 127 | 11.0 | ➔ |
| University Hospital Southampton NHS FT | N60 | University Hospital Southampton NHS FT | RHM | 361 | 16.9 | ➔ |
| | | Dorset County Hospital NHS FT | RBD | 115 | 16.5 | ➔ |
| | | Royal Bournemouth and Christchurch Hospitals NHS FT | RDZ | 241 | 14.1 | ➔ |
| | | Poole Hospital NHS FT | RD3 | 169 | 18.9 | ➔ |

| Surgical trust | Surgical trust code | Lung MDT host trust | MDT trust code | All cases per MDT | MDT resection rate (all comers) | Resection rate significance** |
|--|---------------------|--|----------------|-------------------|---------------------------------|-------------------------------|
| | | Isle of Wight NHS Trust | R1F | 117 | 16.2 | → |
| | | Portsmouth Hospitals NHS Trust | RHU | 376 | 13.0 | → |
| | | Salisbury NHS FT | RNZ | 127 | 18.1 | → |
| | | Hampshire Hospitals NHS FT | RN5 | 202 | 16.8 | → |
| Nottingham University Hospitals NHS Trust | RX1 | Nottingham University Hospitals NHS Trust | RX1 | 573 | 17.5 | → |
| | | United Lincolnshire Hospitals NHS Trust | RWD | 378 | 10.8 | → |
| | | Sherwood Forest Hospitals NHS Foundation Trust | RK5 | 186 | 6.5 | → |
| | | Derby Hospitals NHS FT | RTG | 342 | 17.3 | → |
| All England | | | | | 16.0 | |

*denotes a tertiary trust. These provide treatment for lung cancer patients, but where patients are not usually first seen. The cases may have been incorrectly allocated to this trust, and instead first seen at another trust in the region. The data should be interpreted with caution.

** Statistical significance of resection rate compared with the whole of England, after adjustment for age, sex, stage, performance status, socio-economic status and co-morbidity.

→ **Not statistically significantly different to expected** ↓ **Significantly worse than expected** ↑ **Significantly better than expected**

Appendix 4: Glossary

| | |
|---|---|
| Adjuvant chemotherapy | Chemotherapy given after initial treatment for cancer, especially to suppress secondary tumour formation. |
| ASA grade | The American Society of Anaesthesiologists physical status classification system. A 1–6 grade system to categorise physical fitness before surgery. |
| Bilobectomy | Removal of two of the three lobes of the right lung, either upper and middle together or lower and middle. |
| Biopsy | Removal and examination of tissue, usually microscopic, to establish a precise (pathological) diagnosis . |
| Carinal resection | Removal of part of the windpipe at the point where it divides into the left and right lungs. |
| Casemix | Refers to the different characteristics of patients seen in different hospitals (for example age, sex, disease stage, social deprivation and general health). Knowledge of differing casemix enables a more accurate method of comparing quality of care (see also casemix adjustment). |
| Casemix adjustment | A statistical method of comparing quality of care between organisations that takes into account important and measurable patient characteristics. |
| Diagnosis | Confirming the presence of the disease (see also pathological diagnosis). |
| Enhanced recovery pathway | Initiatives to improve patient outcomes and speed up a patient’s recovery after surgery. |
| FEV1 | Forced expiratory volume in the first second – a measurement of lung capacity used to determine how healthy a patient’s lungs are. It can be measured as an absolute amount, or as a percentage predicted (based on gender, age, height). |
| Hospital trust | An organisation providing secondary healthcare services in England. A hospital trust may be made up of one or several hospitals within a region. |
| Length of stay | Total number of nights spent in hospital during an admission for lung cancer surgery, both before and after the operation. |
| Lobectomy | Removal of one lobe of the lung. This is the commonest type of lung cancer operation. |
| MDT | Multidisciplinary team; a group of healthcare professionals working in a coordinated manner for patient care. |
| NLCA | National Lung Cancer Audit. |
| Non-small-cell lung cancer (NSCLC) | A group of types of lung cancer sharing certain characteristics, which makes up 85–90% of all lung cancers. Includes squamous carcinoma and adenocarcinoma (see also small-cell lung cancer). |
| Odds ratio (OR) | Refers to the chance of an outcome happening after risk adjustment, compared with the national average. |
| Pathological diagnosis | A diagnosis of cancer based on pathological examination of a tissue (histology) or fluid (cytology), as opposed to a diagnosis based on clinical assessment or non-pathological investigation. |
| Performance status (PS) | The World Health Organization’s systematic method of recording the ability of an individual to undertake the tasks of normal daily life compared with that of a healthy person. |

| | |
|--------------------------------------|--|
| Perioperative care | The care that is given before, during and after surgery. |
| Pneumonectomy | Removal of a whole lung. |
| Resection | Surgical treatment of a lung cancer, where a surgeon removes a tumour. |
| Risk adjustment | A statistical process that takes into account underlying health status. |
| RCP | Royal College of Physicians, the professional body of doctors practising general medicine and its subspecialties. |
| Secondary care | Care provided by a hospital, as opposed to that provided in the community by a GP and allied staff (primary care). |
| Sleeve resection | This is removal of a lobe of lung or a whole lung, together with a 'sleeve' of main airway or pulmonary artery, the ends of which are then stitched together. Sleeve lobectomy can sometimes be used to avoid removing a whole lung (see pneumonectomy). |
| Small-cell lung cancer (SCLC) | A type of lung cancer making up around 10–15% of all lung cancers (see also non-small-cell lung cancer). |
| SCTS | Society for Cardiothoracic Surgery in Great Britain and Ireland. This is the specialty organisation representing cardiac and thoracic surgery in the UK and Ireland. |
| Staging/stage | The anatomical extent of a cancer. |
| Surgical resection | An operation to remove abnormal tissues or organs. |
| Surgical unit | A department within a hospital that provides surgery for lung cancer patients. |
| Tertiary trust | Hospitals that specialise in diagnosis and treatment of specific conditions, often handling very complex cases. Other hospitals may refer patients to these centres for specialist treatment. |
| Townsend index | A score used to describe material deprivation, incorporating levels of unemployment, car and home ownership and overcrowding in an area |
| VATS | Video-assisted thoracic surgery. Uses a surgical telescope attached to a video camera and specially made instruments to perform surgery through 1–4 small incisions, usually without spreading the ribs. |
| Wedge resection | A lung resection in which only the lesion and a small piece of lung are removed. The artery, vein and airway supplying that piece of lung are not dissected (as distinct from a lobectomy or segmentectomy). |

Appendix 5: Society for Cardiothoracic Surgery unit audit leads

| Name | Hospital trust |
|-------------------|--|
| Doug Aitchison | Basildon and Thurrock University Hospitals |
| Elizabeth Belcher | John Radcliffe Hospital |
| Ehab Bishay | Heart of England NHS Foundation Trust |
| Alex Brunelli | Leeds Teaching Hospitals |
| Shilly Ghosh | North Staffordshire Royal Infirmary |
| Kelvin Lau | St Bartholomew's Hospital |
| Joe Marzouk | University Hospitals Coventry and Warwickshire NHS Trust |
| Kandadai Rammohan | University Hospital of South Manchester |
| Sion Barnard | Freeman Hospital |
| Carol Tan | St George's Hospital |
| Marc VanLeuvan | Norfolk and Norwich University Hospital |
| Lukacs Veres | Guy's and St Thomas' NHS Foundation Trust |
| Steve Wooley | Liverpool Heart and Chest Hospital |
| Tim Batchelor | University Hospitals Bristol NHS FT |
| Andy Chukwuemeka | Imperial College Healthcare |
| Aman Coonar | Papworth Hospital |
| John Duffy | Nottingham City Hospital |
| Andy Duncan | Blackpool Teaching Hospitals NHS Foundation Trust |
| Joel Dunning | James Cook University Hospital |
| Jonathan Edwards | Northern General Hospital |
| Martin Hayward | University College Hospital London |
| Eric Lim | Royal Brompton and Harefield NHS Foundation Trust |
| Mahmoud Loubani | Castle Hill Hospital |
| Adrian Marchbank | Derriford Hospital |
| Sri Rathinam | Glenfield Hospital |
| Edwin Woo | Southampton General Hospital |
| Patrick Yiu | The Royal Wolverhampton NHS Trust |

Royal College of Physicians
11 St Andrews Place
Regent's Park
London NW1 4LE

National Lung Cancer Audit
Email: nlca@rcplondon.ac.uk
www.rcplondon.ac.uk/NLCA



**Royal College
of Physicians**

National Lung
Cancer Audit